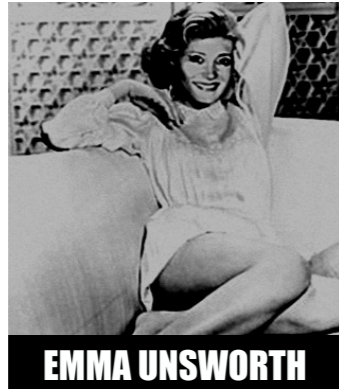


# THE PEOPLE WHO BROUGHT YOU THIS BOX IS ALL YOURS



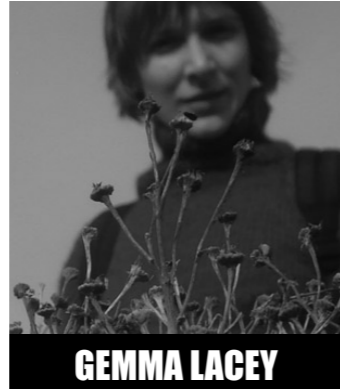
**ANNA MACGOWAN**

Anna has recently been published by *Mslexia*. Her text performance - 'I'm Trying to Give You Everything' - is about to be produced by Apple Pie Editions. Her first novel died of old age, her second died from neglect. Her third is looking suspiciously healthy.



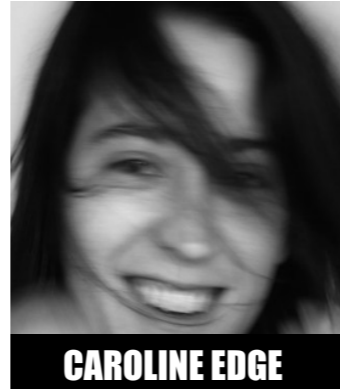
**EMMA UNSWORTH**

If Emma Jane Unsworth were president, she'd do her own jokes, if not her own hair. Emma has had short stories published by Comma, Redbeck, Prospect and Channel 4, and writes a fortnightly column for The Big Issue in the North. She has just completed her first novel.



**GEMMA LACEY**

Gemma lives and works in Manchester with print and books, art groups, art classes and Hot Bed Press. Some time ago she made hundreds of seed-like things out of wire, paper string and old chiffon scarves. They spent years outside, swept by the wind, rain and smoke. Now they crumble to dust when she presses them into ink and paper.



**CAROLINE EDGE**

Caroline recently completed an MA in Photography at Bolton University, and now work as a freelance press photographer based in Manchester. Her most recent exhibitions of documentary work have been in Lourdes, France and Siberia, Russia.

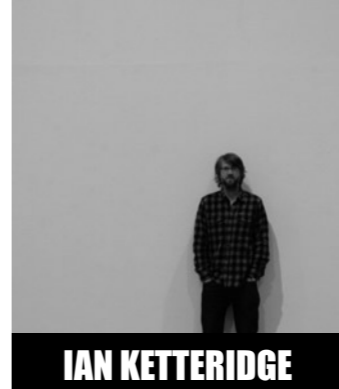
[www.carolineedge.com](http://www.carolineedge.com)



**HELEN KAPLINSKY**

Helen sits somewhere between artist and curator. Her current work focuses on the bureaucratic ephemera of this combined practice. She's worked for The Victoria and Albert Museum, Transition Gallery, Battersea Arts Centre and London College of Fashion and has curated over ten exhibitions. She is currently working with Islington Mill Art Academy.

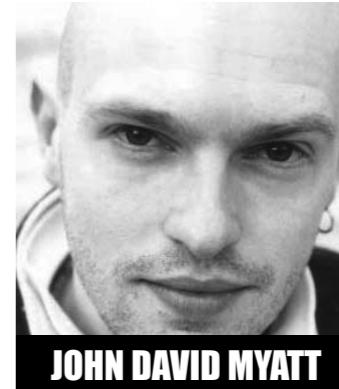
[www.helenkaplinsky.com](http://www.helenkaplinsky.com)



**IAN KETTERIDGE**

Currently living in Toronto, Canada. Ian has a BA in Fine Art Photography. His practice is based on an on-going examination of the urban and rural landscape; how we view and interpret these environments and the activities that occur within them.

[www.ianketteridge.com](http://www.ianketteridge.com)



**JOHN DAVID MYATT**

John's first play was nominated for an M.E.N. Drama Award. His shorts have been published in the Gay Times Book of Short Stories, City Secrets, and The Illustrated Ape. And he has just written 'Strange Trees' for award-winning Club Brenda. His first novel didn't get published. He's hoping his first TV drama will buck the trend. Also, he's very aware that it's an old, misleading promo pic.



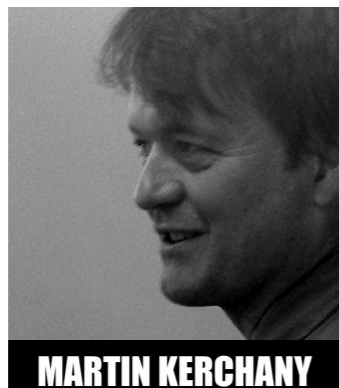
**KELDA SAVAGE**

Kelda has shown her work in Turin, Madrid, Berlin, New York and the UK. As a curator, she has profiled the work of artists, makers and designers in The City Gallery (Leicester), Saltburn Artists' Projects, Knighton Lane Artists Group, mima, Artspace, and Smile Plastics. She is Crafts Programme Officer at Manchester Craft & Design and North West Creative Co-ordinator at Urbis.



**KEVIN CRAIG**

Kevin has been designing posters, record sleeves and magazine adverts for several years, primarily for Little Red Rabbit Records. His images, cut from a single sheet of paper, depict silhouette narratives of folklore and mythical tales. His cut-out images translate naturally to screenprinting, a process he is now exploring.



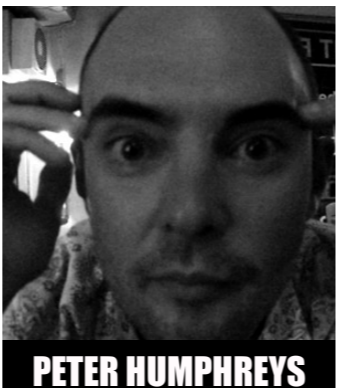
**MARTIN KERCHANY**

According to his passport, Martin is a Grocer and Printmaker. He is also a member of Hot Bed Press.



**OLIVER FLUDE**

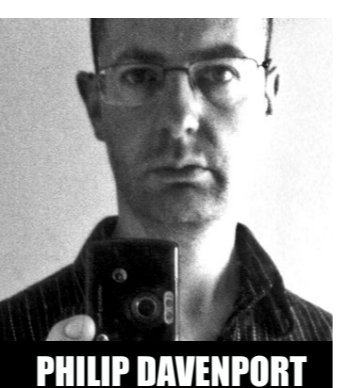
Olly is an illustrator, printmaker and comics writer, working and living in Manchester. He has a studio at Hot Bed Press print workshop in Salford. He's from a small town where all the old people knew each other.



**PETER HUMPHREYS**

Pete gets up early to write each morning or else lies in and feels dirty. It's not ideal but has so far led to one and half novels, a Victorian blog and an unsightly rash of short stories, some of which are available from his website.

<http://peterhumphreys.weebly.com>



**PHILIP DAVENPORT**

Philip is one of a new wave of experimental poets who acknowledge contemporary art as much as poetics. The poems are made from found text: journalism, porn, txt messages, overheard voices: the daily, unnoticed, backdrop of us. His poems appear in art galleries, recordings, posters, publications, performances, streets and shop windows.



**RACHEL MCHAFFIE**

Rachel is a Manchester based Photographer. Rachel covers a range of ethnographic situations in her work, with a specialism in Music industry. She works at Staffordshire University, as Award Leader for Photojournalism. Her work features images from an 80 mile daily commute. They are un-altered and most are taken at 70 miles per hour.



**SEAN RORKE**

Sean is a printmaker and development manager at Hot Bed Press in Salford. His box work is 350 found compositions, unrefined scribbles and dawbs. In his own words: 'Unapologetic and real. Just that.'



**STEPHEN WISEMAN**

Born in north London in 1976 is a Manchester based graphic designer and art director. He studied Design & Art Direction and Communication Studies at the Manchester Metropolitan University and is currently working at Air Creative based in Salford. He also does website and graphic design for his shared creative projects agency, Bubblebox.